



### BLACK L.E.D. SADDLEBAG EXTENSIONS

7171

#### Thank You For Choosing Kuryakyn!

Protect yourself and others from potential injury and property damage or loss. Pay close attention to all instructions, warnings, cautions, and notices regarding the installation, use, and care of this product.

#### **WARNING**

THIS INDICATION ALERTS YOU TO THE FACT THAT IGNORING THE CONTENTS DESCRIBED HEREIN CAN RESULT IN POTENTIAL DEATH OR SERIOUS INJURY.

#### **NOTICE**

This indication alerts you to the fact that ignoring the contents described herein may negatively affect product performance and functionality or damage the product itself or the product to which it is being attached.

#### ENSURE THAT THE FOLLOWING PARTS HAVE BEEN INCLUDED IN THE KIT:

- 1 Right Saddlebag Extension
- 1 Right Extension Trim
- 1 Left Saddlebag Extension
- 1 Left Extension Trim
- 1 Hardware Kit containing:
  - 1 Dielectric Grease Pack
  - 8 Cable Ties
  - 2 Alcohol Pads
  - 6 Cord Keepers
  - 1 8-Pin Adapter
- 1 Installation Instructions

#### YOU WILL ALSO NEED:

Warm, soapy water and a clean rag, painter's/masking tape

#### **NOTICE**

These installation instructions contain important information. Ensure that the end user receives this copy and is aware of its importance for future use.

- STEP 1** Read and understand all steps in the instructions before starting the installation. Park the motorcycle on a hard, level surface and turn **IGN OFF**. Allow the engine and exhaust system to cool. Remove the main fuse.

#### **WARNING**

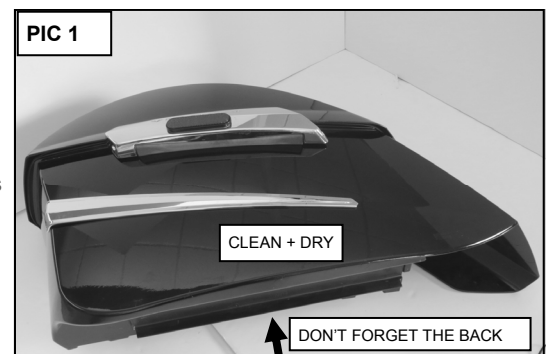
ACCIDENTAL VEHICLE START-UP COULD CAUSE DEATH OR SERIOUS INJURY, REMOVE THE MAIN FUSE BEFORE PROCEEDING.

- STEP 2** Prepare a soft, sturdy work surface at a comfortable height within arm's reach of the motorcycle.

- STEP 3** Remove the seat. Remove both saddlebags; set them on the work surface; disconnect any existing wiring (if applicable) before removing the saddlebags. Remove the clutch-side (left) side cover.

- STEP 4** Refer to **PIC 1**. Using warm soapy water and a clean rag, remove all dirt and debris from the exterior surfaces of both saddlebags (don't forget the backside); allow the areas to dry completely.

Wipe the installation areas with the included alcohol pads to remove any wax or polish; allow the areas to dry completely.



**STEP 5** Determine the Left and Right Extension (they are marked **L** and **R**).

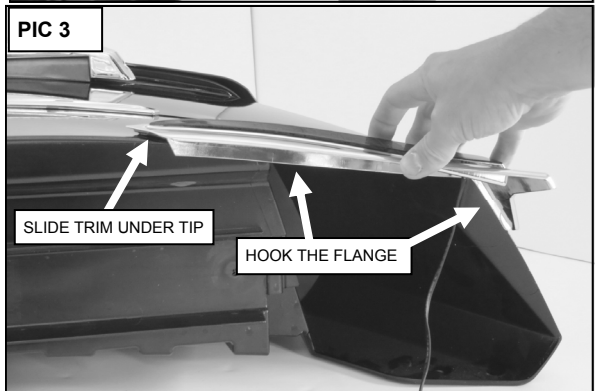
Test fit the Extension as shown in **PIC 2**. “Hook” the flange over edge of the saddlebag as shown in **PIC 3**.

Use masking tape to make alignment marks; remove the Extension.



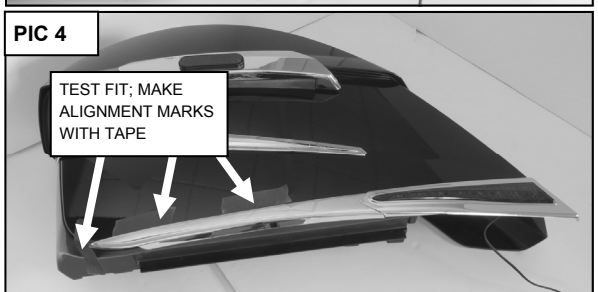
**STEP 6** Use your fingernail to rub the adhesive backing; this will activate the adhesive. Remove and discard the backing.

Align the Extension and press it into place for one minute; full bonding will occur after 24 hours. Remove and discard the masking tape.



**NOTE:** If the bike is going to be operated before full bonding occurs, secure the Extension to the fairing with a good quality masking or painter’s tape.

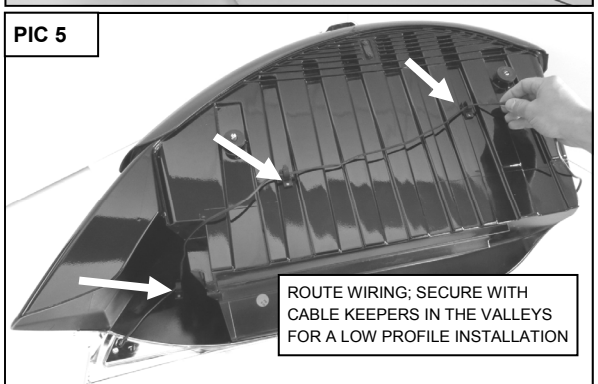
**STEP 7** Test fit the Trim as shown in **PIC 4**; apply it to the saddlebag in the same way as the Extension. Slide the Trim underneath the tip of the Extension (see **PIC 3**).



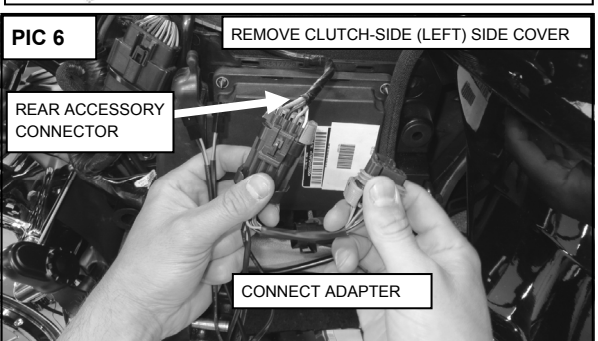
### NOTICE

Secure the wiring away from moving parts, pinch points, or extreme heat. Kuryakyn will not provide warranty coverage on any electrical component that fails due to pinched, crimped, broken, abraded, melted, or frayed wires.

**STEP 8** Turn the saddlebags over; route the wiring as shown in **PIC 5**; secure the wiring with the included Cable Keepers. Rub the adhesive backing, remove and discard the backing and apply to a clean, dry surface. Apply the Keepers in the “valleys” for a low profile installation.



**STEP 9** Refer to **PIC 6**. Locate the 8-Pin rear-accessory wiring-harness on the motorcycle; connect the included 8-Pin Adapter to the accessory connector.



**STEP 10** Route the longer end of the Adapter to the area in front of the brake-side (right) saddlebag; route the short end of the Adapter to the area in front of the clutch-side (left) saddlebag.

**STEP 11** Reinstall the saddlebags; ensure that the wiring is routed towards the front end without getting pinched or crushed.



### NOTICE

Dielectric grease inhibits moisture and prevents corrosion. Kuryakyn recommends the use of the included dielectric grease on **ALL** electrical connections. Apply dielectric grease directly to mating surfaces.

- STEP 12** Connect the small 3-Pin Left-Extension connector to the short side of the Adapter.  
Connect the Right-Extension connector to the long side.
- STEP 13** Reinstall the main fuse; turn **IGN ON**; test for proper function of **ALL** lights/signals. The Extension lights are **RUNNING** lights.
- STEP 14** Secure all extra wiring out of harms way with the included Cable Ties; reinstall the side cover; reinstall the seat.

### ⚠ WARNING

VISIBILITY IS A **MAJOR CONCERN** FOR MOTORCYCLISTS. A LIGHT MALFUNCTION COULD RESULT IN DEATH OR SERIOUS INJURY. ENSURE PROPER LIGHT OPERATION **BEFORE** RIDING THE MOTORCYCLE.

### NOTICE

It is the end user's responsibility to ensure that all fasteners (including pre-assembled) are tightened before operation of the motorcycle. Kuryakyn will not provide warranty coverage on products or components lost or damaged due to improper installation or lack of maintenance. Periodic inspection and maintenance are required on all fasteners.

#### LIMITED WARRANTY

Kuryakyn warrants that any Kuryakyn products sold hereunder, shall be free of defects in materials & workmanship for a period of one (1) year from the date of purchase by the consumer excepting the following provisions:

1. Kuryakyn shall have no obligation in the event the customer is unable to provide a receipt showing the date the customer purchased the product(s).
2. The product must be properly installed, maintained & operated under normal conditions.
3. Kuryakyn shall not be liable for any consequential & incidental damages, including labor & paint, resulting from failure of a Kuryakyn product, failure to deliver, delay in delivery, delivery in nonconforming condition, or for any breach of contract or duty between Kuryakyn & a customer.
4. Kuryakyn products are often intended for use in specific applications. Kuryakyn makes no warranty if a Kuryakyn product is used in applications other than intended.
5. Kuryakyn electrical products are warranted for one (1) year from the date of purchase by the consumer. L.E.D.'s contained in components of Kuryakyn products will be warranted for defects in materials & workmanship for 3 years from the date of purchase whereas all other components shall be warranted for one (1) year.
6. Merchandise purchased directly from Internet auction sites or any other third party seller is considered sold as is & shall not carry a Kuryakyn warranty. All warranty claims must be directed to the original seller. If unsure please contact the seller to verify they are an authorized Kuryakyn retailer.

#### RETURN POLICY

Merchandise determined to be defective may be returned up to one year from the date of purchase. Returns must be processed through original seller. Returned merchandise for any other reason other than warranty claims must be in like new condition & subject to a 20% restocking fee. All returns are subject to inspection for determination of full or partial credit. Any returned part that shows evidence of being used or installed contrary to manufacturer's instructions, &/or subjected to improper handling, packaging or return shipping by the customer, will not be eligible for exchange, refund or warranty consideration. All returned electrical items will be inspected & tested. If electrical item is deemed functional, no credit will be issued & item will be returned. All sales are final on discontinued or closeout merchandise.